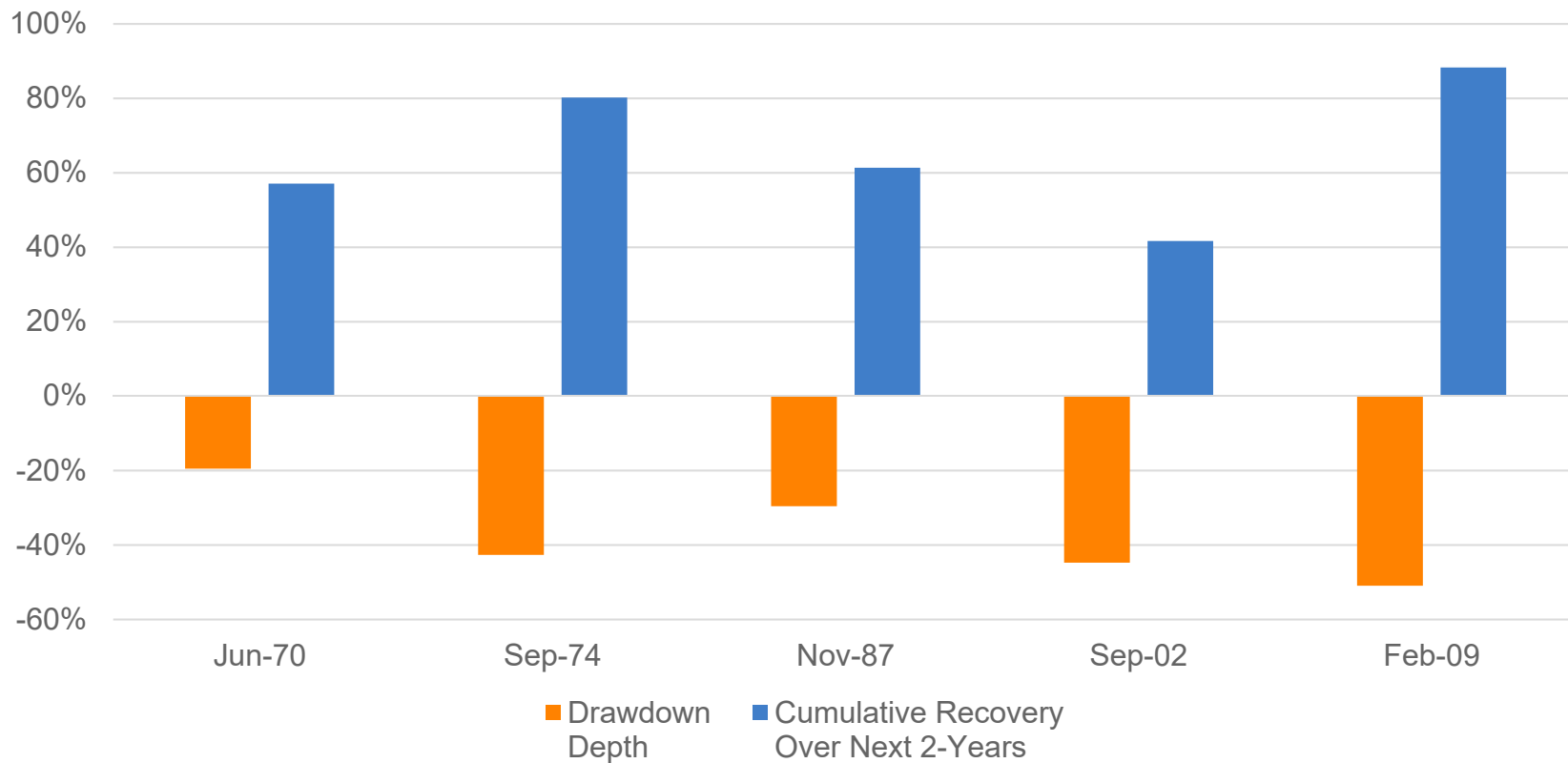


What Goes Down, Has Historically Returned In Strength

U.S. Equities: Five Largest Drawdowns & Cumulative Recovery Over the Next Two Years



U.S. Equities represented by the S&P 500 Index from January 1970 – December 2019. See disclosures for index definitions. An investor cannot directly invest in an index. Source: eVestment and Brookfield. **Past performance is not indicative of future results. For illustrative purposes only.**